

Urban Offices

Lottumstraße 26

Modern Office Space:

- 105 sqm
- 1 big open space, 1 meeting room
- Up to 18 desks
- Fully furnished setup available

Available from: 1st of October 2022

Sven Hock

m: +49 175 591 51 28

e: sh@bhi.com.de

www.urban-offices.de

Lottumstraße 26



Key Facts

Availability

Available from 1.10.2022

Rental Costs*

Furnished: 3.615 EUR /
month

Unfurnished: 3.300 EUR /
month

Deposit

9.900 EUR

Rental Period

Minimum: 12 months

Maximum: 60 months

General

Location: Lottumstraße 26
10119 Berlin (Mitte)

Google Maps: [Link](#)

Floor: 1st floor

Location in the Building: In the backyard

Space: ~ 105 sqm

Desk Capacity: Up to 18 desks

Rooms: 1 separate room
1 open space
Flexible floorplan

Sanitary Facilities: 1 toilet (m/f/d)

Elevator / Barrier free: no

Kitchen: Yes (included)

Additional

Ancillary Costs*: 315 EUR / month

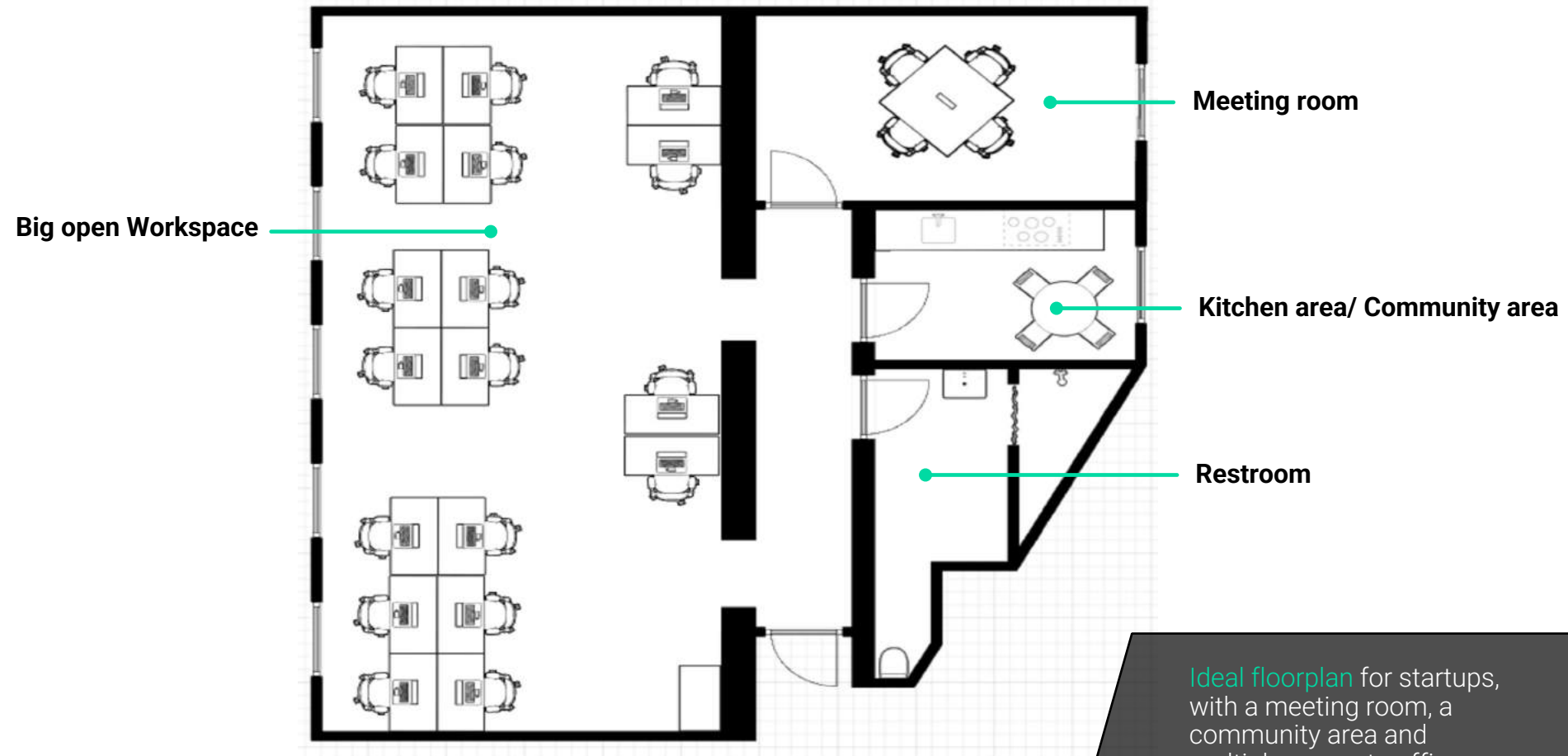
Cleaning: Not included, available on request

Internet: Not included

Ethernet Infrastructure: Installed

Parking: Upon availability

Floor plan: Office space with potential for 18 working desks



Total Space: ~105 sqm

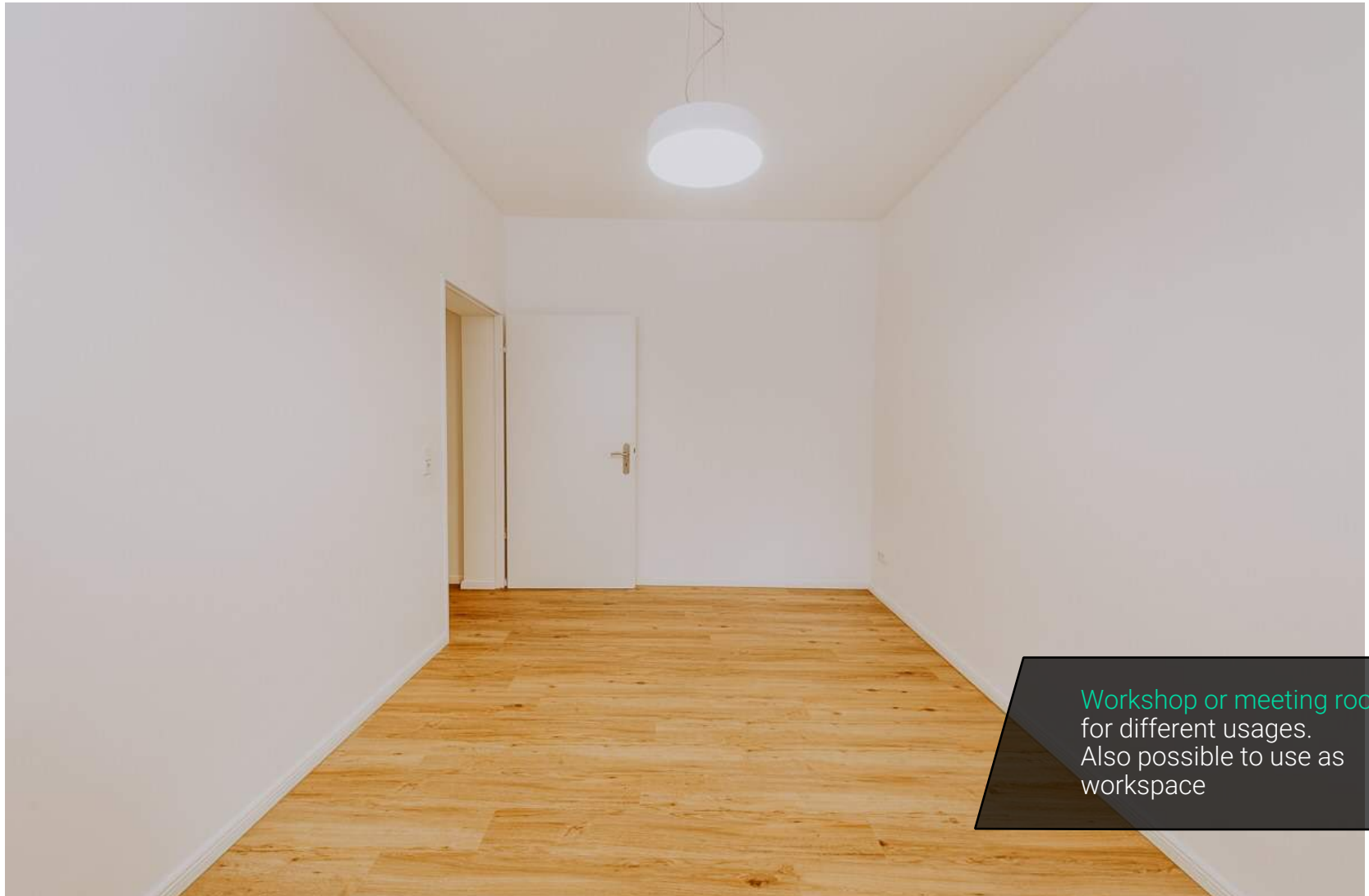
Ideal floorplan for startups,
with a meeting room, a
community area and
multiple separate offices

Large open workspace with lots of natural light



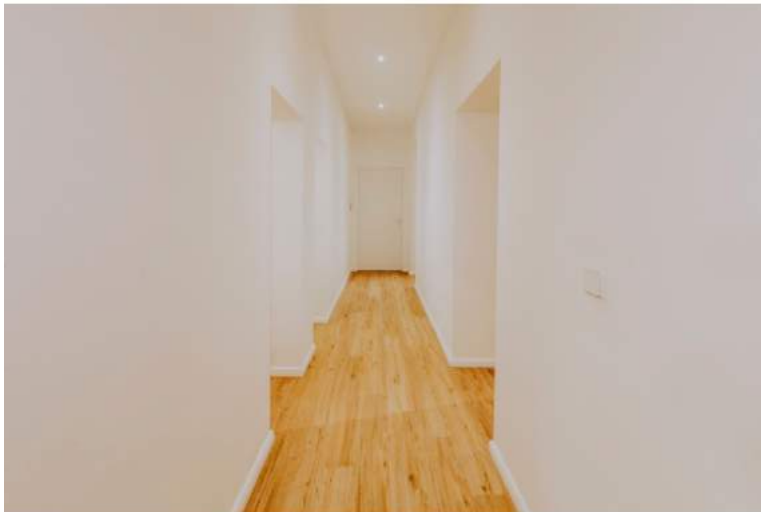
Working space offers
flexible usage options to fit
your needs (work vs.
community space)

Large meeting room



Workshop or meeting room
for different usages.
Also possible to use as
workspace

Bright and free-flowing spaces with high ceilings and a study floor

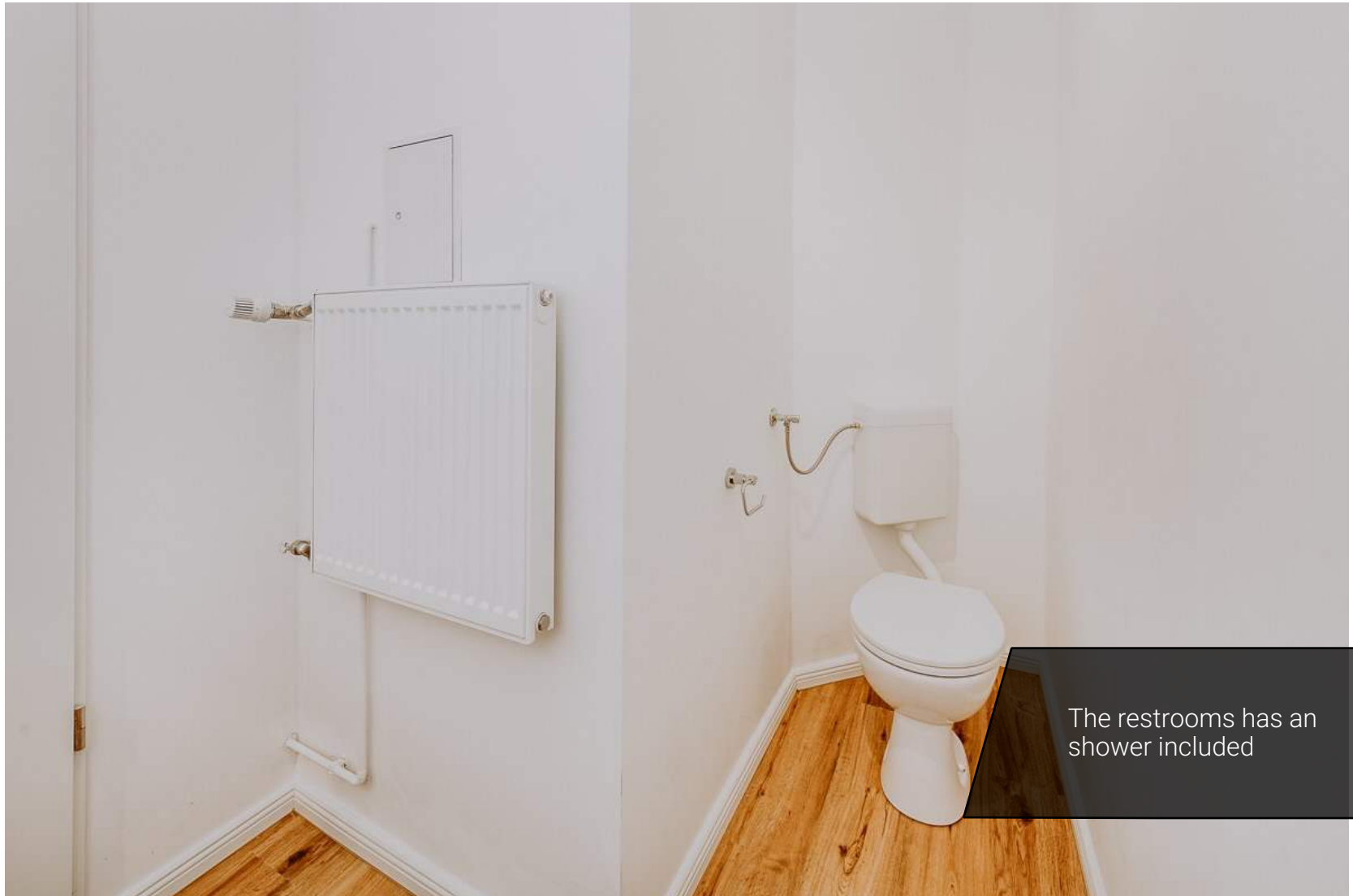


The kitchen comes with a dishwasher, fridge and an oven



Separated from the working area. Additional kitchen equipment (e.g.: coffee machine) available

1 toilet (m/f/d)

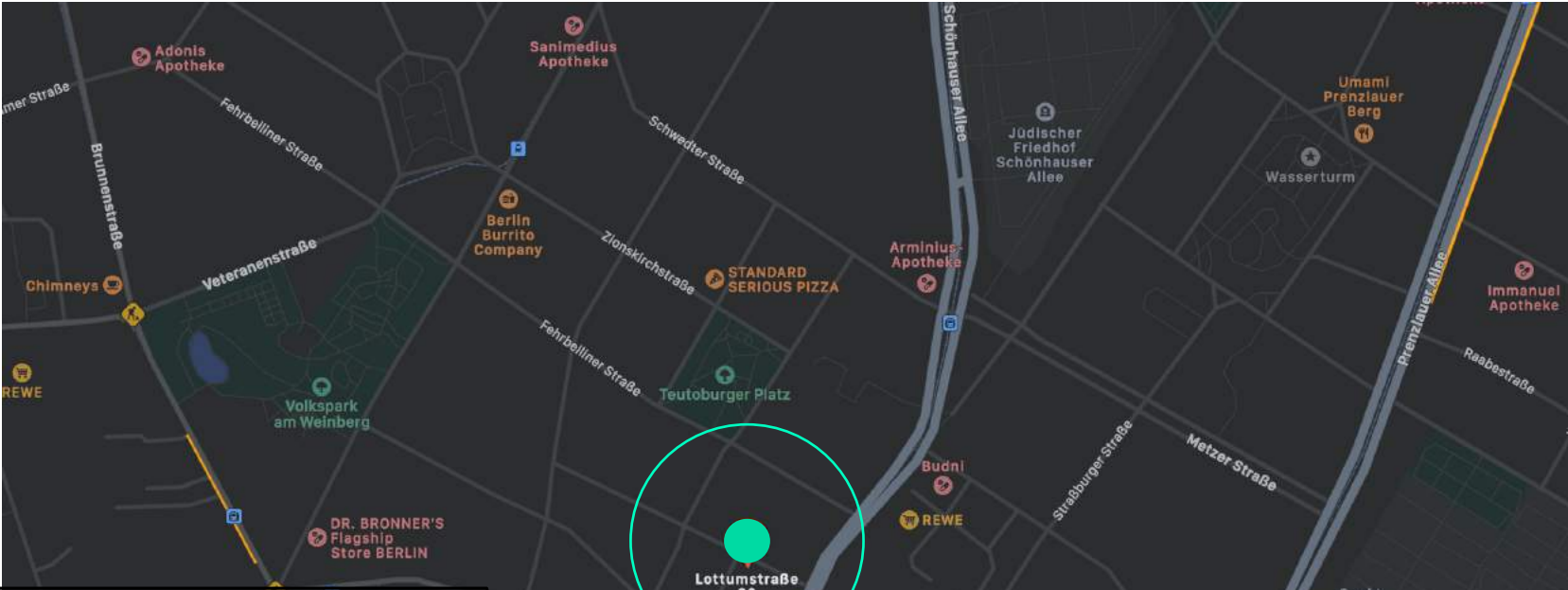


The restrooms has an
shower included


Quiet and safe working environment



Location – In the heart of Prenzlauer Berg



NEIGHBOURHOOD

-  Different cool well-known cafés & restaurants around the corner
- Supermarkets close by: Rossmann, Rewe, Edeka
- Best infrastructure: e.g. Weinbergspark 5 min away

PUBLIC TRANSPORT

- Great public transportation connection for your team, customers and investors.
- U2** Senefelder Platz (~2 min) (6 min drive to Alexander Platz)
- U2** Rosa-Luxemburg-Platz (~3 min walk)
- U8** Rosenthaler Platz (~15 min walk)

Not happy yet? – Contact us

Sven Hock
 m: +49 175 591 51 28
 e: sh@bloser-hock-immobilien.de
www.urban-offices.de

We are entrepreneurs ourselves and know how challenging it is to find the right move-in ready office space that fits your special needs in Berlin.

Having scaled companies from 1 to 200 people we were constantly looking for new adequate spaces. If you are looking for a space for your team of 10 or 200 people, please reach out to us.

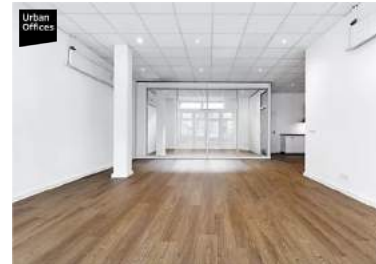
If we do not have the right office for your at the moment one of our partner companies will have one for sure.



100 sqm – 12 desks, 1 meeting room
LINIENSTRASSE



130 sqm – 18 desks, 1 meeting
WINSSTRASSE



195 sqm – 20 desks, 1 meeting room
ARKONAPLATZ



145 sqm – 20 desks, 1 meeting, terrace
ARNIMPLATZ



600 sqm – 70 desks, 6 meeting rooms
FRIEDRICHSTRASSE



920 sqm – 110 desks, 7 meeting rooms
Chausseestraße